



COMPOST TOILET MANUAL





Thanks for choosing OGO™
GO OFF GRID

Dear Valued Customer

We want to say thank you and congratulations on your new off grid sanitary solution.

OGO™ is committed to quality and customer service. We are on the journey to provide solution based products that are innovative and modern.

Products that work with any lifestyle and space, making off grid living an easy transition.

Each unit is 100% inspected before leaving our facility to ensure you are receiving the highest quality!

This unit's quality control specialist was:



What's in the Box?	3
Tech Specs	4
Warranty	4
Safety	5
Installation	6
Power	6
Venting	7
Compost Medium	7
How to Use	8
Urination	8
Solids Use	9
Cleaning	9
Urine Disposal	10
Solids Disposal	11

What's in the box?



We try to make it easy to get you started...

- The OGO™ Toilet
- Mounting Screws
- 5ft Vent Hose -
- 12V Power Cable
- Spray Bottle
- Urine Bottle Cap

ogotoilet.com | 567.271.2020 | sales@ogotoilet.com

WARRANTY

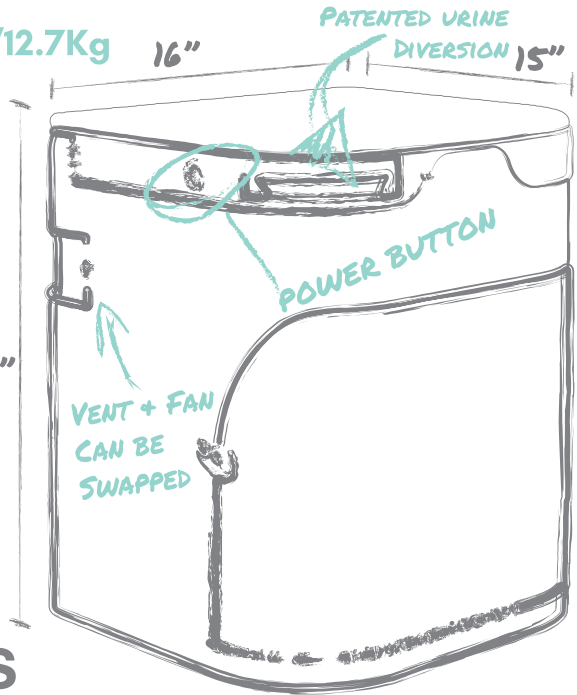
We offer a **FIVE(5)** year manufacturing and materials warranty and a **ONE (1)** year electrical warranty for this product. These warranties do not apply to incorrect use or if the customer has damaged or altered the product in some way. If you have any questions regarding spare parts or warranty, please reach out to us at support@ogotoilet.com.

TECH SPECS

Each unit weight 28lbs/12.7Kg

- Max weight limit 500lbs/226.79Kg
- Solids bin has a capacity of 25-30 uses before needing changed
- Urine bottle holds just over 2.4 gallons of liquid

18.38"



POWER SPECS

OFF GRID

We recommend a deep cell battery with a 12V capacity.

WIRED ELECTRIC

Power adapter needed plug into 110V outlet

Fan Power

- Always on
- 20 mA rating
- 0.48 Ah/day

Motor Power

- On when mixing
- 45 sec. cycle time
- 5 Amp rating
- 1.8 Amp Average Draw



ogotoilet.com | 567.271.2020 | sales@ogotoilet.com



IMPORTANT SAFETY INFO

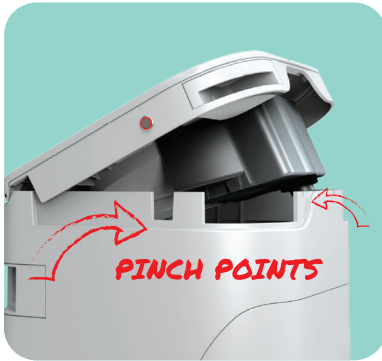
PLEASE READ ALL SAFETY INSTRUCTIONS CAREFULLY BEFORE USE.

THE MANUFACTURER IS NOT RESPONSIBLE FOR ANY PERSONAL INJURY OR OTHER DAMAGES OCCURRING AS A RESULT OF FAULTY INSTALLATION OR IMPROPER USE. PLEASE SAVE THIS MANUAL FOR YOUR REFERENCE

WARNING!

Do not use this product if it has been damaged or is not working properly

GENERAL PRECAUTIONS



AVOID ELECTRIC ISSUES

Never use a damaged power cord or plug. Never run power cord over hot surfaces or sharp edges. Ensure power cable and connections are correct before operating. Consult manufacturer or professional for questions regarding electrical concerns, comments, or questions.

REGULAR MAINTENANCE

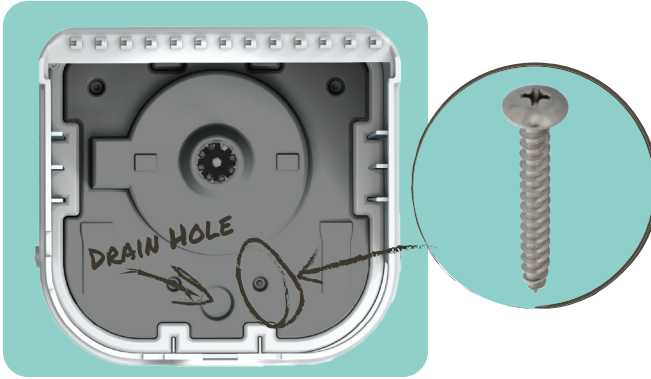
Regular maintenance and cleaning are critical to ensure your OGO™ is working properly. For a full list of procedures visit ogotoilet.com. Monthly cleaning kits are available to ensure you can stay up to date without worry.



ogotoilet.com | 567.271.2020 | sales@ogotoilet.com

INSTALLATION

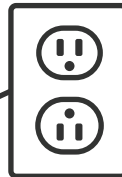
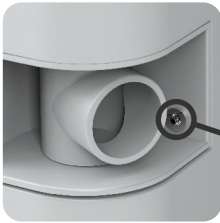
Place the provided x4 (#14 - 3/4") stainless steel screws into mounting holes and use a screwdriver or drill to tighten the base of the toilet to the floor. Drain holes can be removed to install drain kits.



POWER

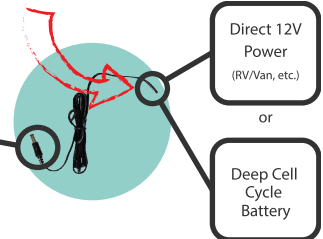
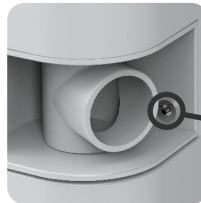
If you have access to 110V, plug one end of the power adapter (sold separately) into a wall outlet, and the other end into the small power jack (5.5 x 2.5 mm jack) on the back of the toilet.

If you have access to 12V, connect the positive (RED) wire of the power cable to the positive terminal of the battery. Repeat with negative wire (BLACK) and terminal connection. Plug power jack into unit.



REMEMBER
RED= POSITIVE
BLACK= NEGATIVE

**WE ARE HERE IF YOU HAVE
QUESTIONS. PROPER WIRING
IS KEY TO SAFE OPERATION
OF YOUR OGO™**



ogotoilet.com | 567.271.2020 | sales@ogotoilet.com

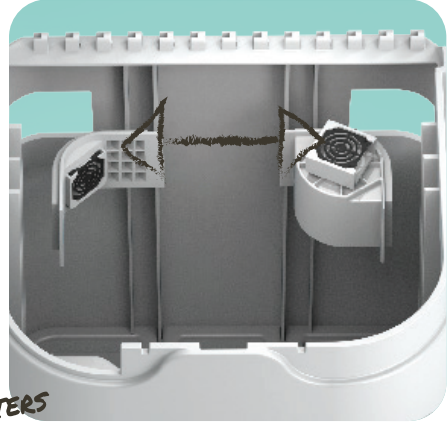
VENTING

Proper ventilation can help odor control.

The inserts for the venting/power and inlet filter can be swapped depending on which direction your power source/venting capabilities are coming from. Using a small flat screw driver, pop out the insert from the inside of the toilet, and pop them back in on the desired side.

VENTING HOSE

Your OGO™ comes with a 5ft vent hose that has black adapters on each end. These hose ends fit a 1-1/4" PVC pipe. Place one end of the hose on the T-bar that's on the back of the toilet. The other end will attach to your exterior venting capabilities.



PRO TIP:
CHARCOAL FILTERS
ARE A GREAT WAY
FOR EXTRA FILTRATION

COMPOST MEDIUM

We highly recommend COCO COIR as our preferred compost medium in our solids bin.

Please do not use wood chips/sawdust/soil/animal bedding in your unit. These mediums will become clay like, causing issues to your motor. Your solids bin composting medium needs to be the correct balance of moisture and consistency to effectively operate your unit.

We like to make things simple and that is why we sell convenient single packs of COCO COIR, just add water to side of bin.

TRY OUR 6PK:
NEVER RUN OUT WHEN
YOU'RE ON THE GO!



ogotoilet.com | 567.271.2020 | sales@ogotoilet.com

HOW TO USE YOUR OGO™

FILLING SOLIDS BIN

Now let's get to the everyday use of your unit. First step is getting your solids bin set up correctly. Pick your compost medium and fill to the appropriate level. This is critical for your unit to work properly. Fill bin to slightly below the proper fill line with your medium of choice. Add water until it is wet to touch and allow the agitator to fluff the medium until it meets the proper fill line.

PLACE BIN SO STIR ROD MOUNTING BOLTS ARE FACING THE FRONT



URINATION

Our patented trap door allows OGO™ to divert urine from solid waste, reducing unfavorable odors. The urine funnels to the bottle below. It is suggested men sit while using the toilet. Even if some urine gets into the trap door area, it will still properly funnel into the bottle below. After each use we suggest spraying the bowl to keep your unit clean.



ogotoilet.com | 567.271.2020 | sales@ogotoilet.com

SOLIDS

Start by opening the trap door. Pull handle STRAIGHT FORWARD away from unit. When finished close the trap door with the same motion, ensuring it is closed completely. Push the power button. The power agitator will be active for 45 seconds, mixing the solids with the compost medium. Average capacity is 25-30 uses before needing emptied.

Toilet paper works well with proper medium consistency and moisture. We recommend using single ply and/or biodegradable toilet papers. Ensure toilet paper does not gather and collect into large clumps to allow your agitator can move freely.



PRO TIP:
MONTHLY CLEANING KITS
HELP GIVES EVERYTHING
NEEDED TO KEEP YOU GOING

CLEANING

As with any sanitation solution, OGO™ needs regular cleanings to ensure proper user hygiene. We suggest spraying with water and wiping down after every use for both urine and solid usage. Everyone is different in frequency, usage, and bathroom etiquette. Adapting some common best practices help keep your unit running like new.



ogotoilet.com | 567.271.2020 | sales@ogotoilet.com

DISPOSAL

URINE DISPOSAL

To access the urine bottle of your OGO™, lift the bowl slightly. Place provided cap on bottle. Rotate the drawer latches and pull drawer out. Grab by handle and lift up out of the drawer. **IMPORTANT!** Always consult your local environmental office to find out what regulations apply in your municipality. Always follow your local guidelines and laws for properly disposing of waste.



ogotoilet.com | 567.271.2020 | sales@ogotoilet.com

SOLIDS DISPOSAL

To access the solids bin of your OGO™ lift the bowl slightly and remove the drawer. Pull bin from top or tilt and pull from front. Place solid mixture into a compost friendly bag or directly into your compost pile. Full compost cycle will take 6 to 12 months. Always consult your local environmental office to find out what regulations apply in your municipality. Always follow your local guidelines and laws for properly disposing of waste.



GO OFF GRID!!
OGO™

ogotoilet.com | 567.271.2020 | sales@ogotoilet.com



ogotoilet.com | 567.271.2020 | sales@ogotoilet.com

